



M72-25 SPECIFICATIONS

M72-25 C-Bass

OVERVIEW

The M72-25 is a member of the M72 “C-Bass” family of very low frequency electrodynamic sound projectors.

This source is capable of transmitting arbitrary waveforms, including single and combined tones, frequency modulated sweeps, communication signals and white or shaped noise. It omits an omni-directional response which can be used individually or in arrays to produce high-power sources with or without directivity.

This versatile source is suitable to be used for over-the-side trials, routine VLF calibrations, long-duration moorings, or integration into custom systems. It can be utilized as a beacon for navigation or timing, target emulation, VLF communication systems, VLF acoustic science, and more.



CHARACTERISTICS

PHYSICAL:

Max Operating Depth with Standard Passive Compensation [10GAL]	10 m
Max Operating Depth with Standard Active Compensation	230 m
Mass	402 Kg
Apparent Mass in Water	175 Kg
Storage Temperatures	-40°C to +70°C
Operating Temperatures	0°C to +35°C

ACOUSTIC:

Resonance Frequency @20m Depth	25 Hz
Maximum SPL @ 1 m	197 dB re 1 μPa
Transmitting Range	1Hz-200Hz
Directivity	Omni-Directional

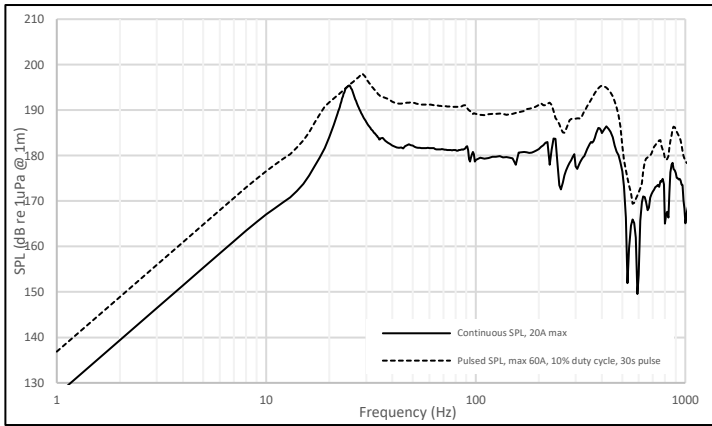


Figure 1: Sound Pressure Level Limits Plot for M72-25

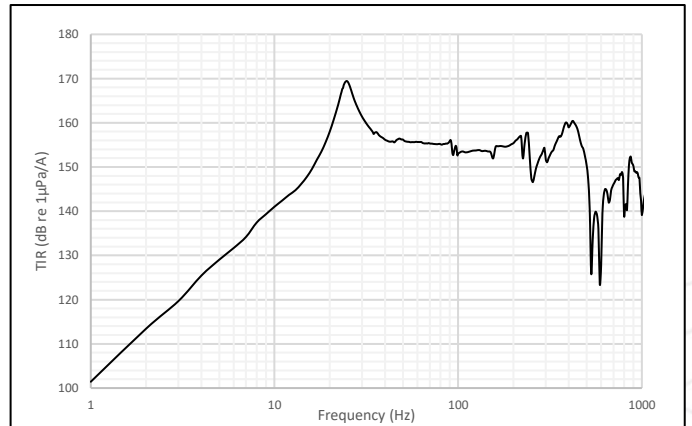


Figure 2: Transmit Current Response for M72-25

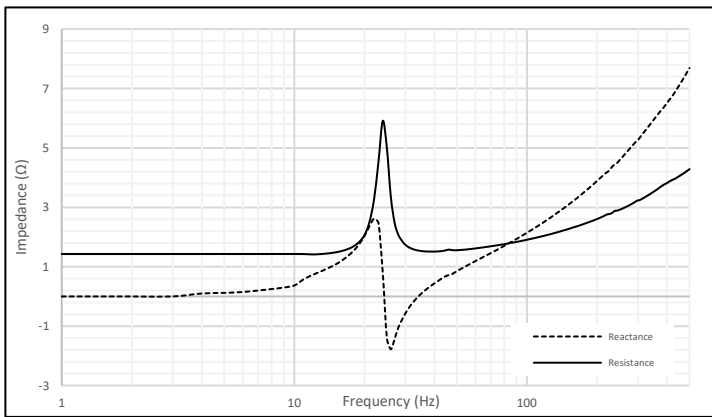


Figure 3: Impedance Plot for M72-25

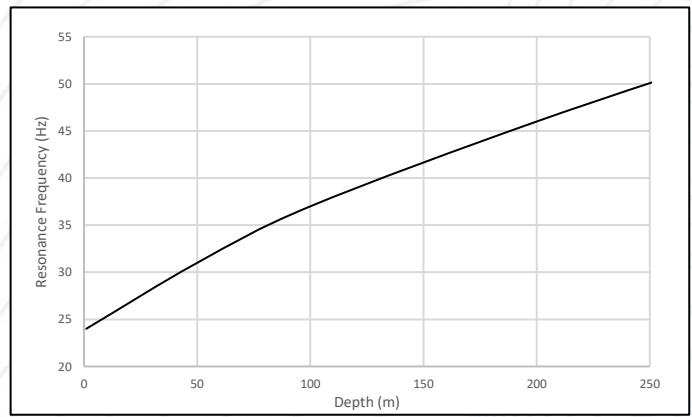


Figure 4: Modelled Resonance Frequency vs Depth

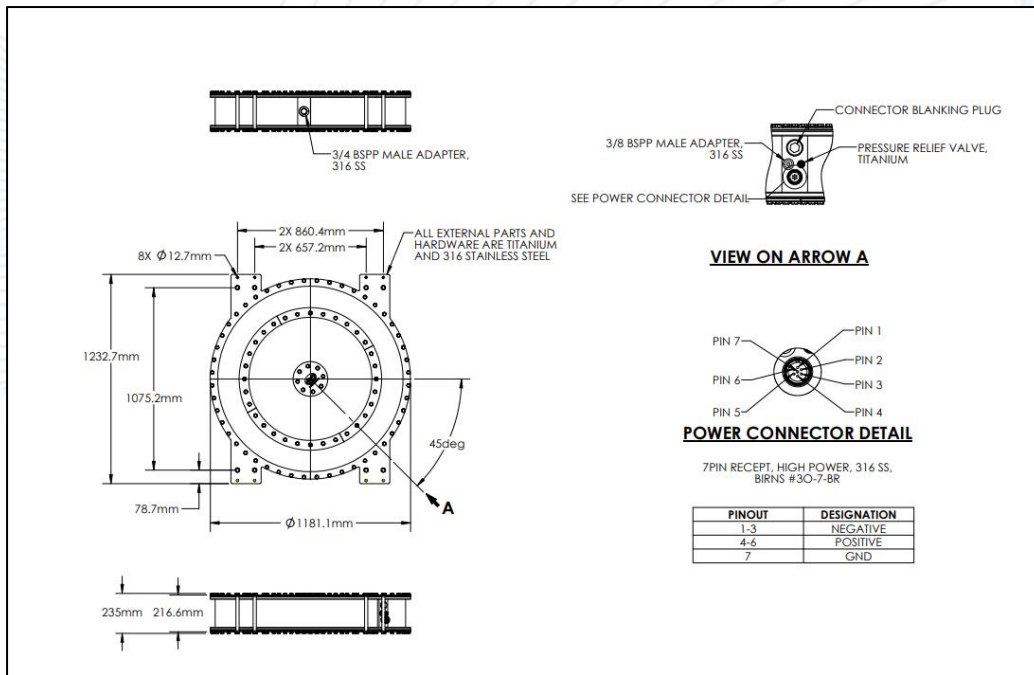


Figure 5: Dimensions of the M72-25 with labeled pin out