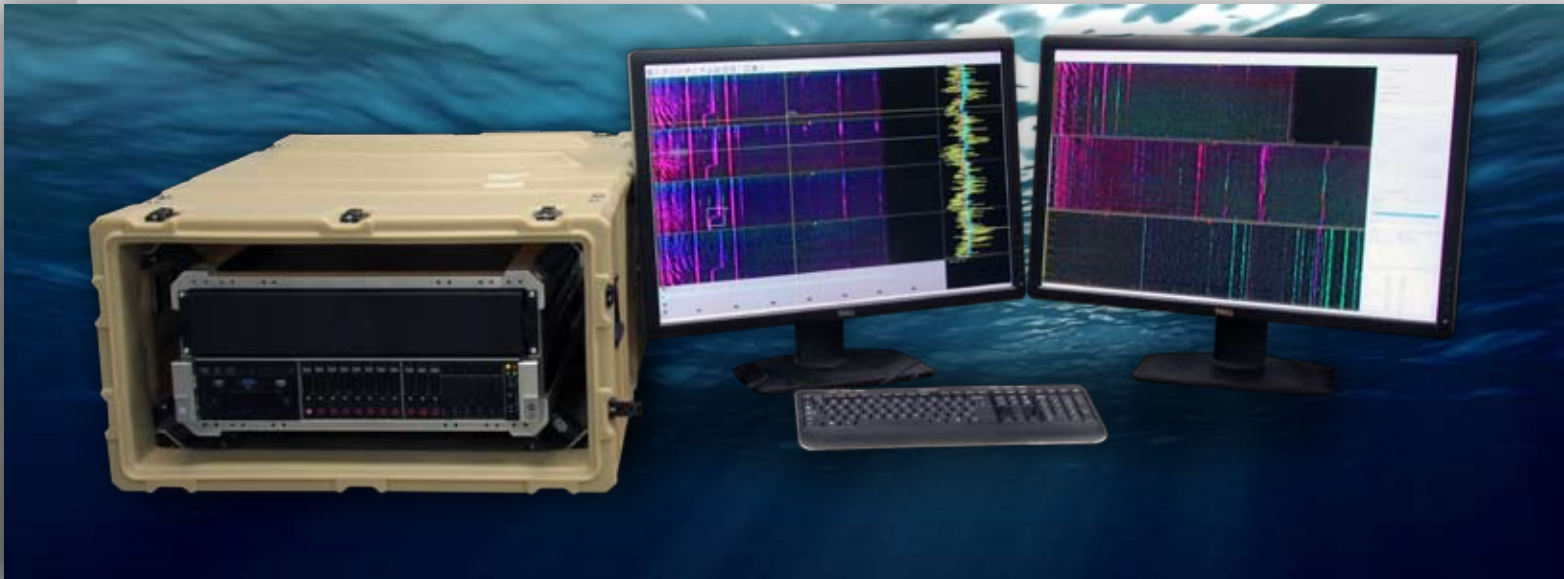




**GeoSpectrum Technologies Inc**  
Customizing Detection

# TruView - Rapid Acoustic Data Processing System

**Post-Mission Sonar Analysis & Display with Threat Database Support**



## Turn-key Capability

TruView is a turnkey system to accept, process and analyze sonar data from multiple and diversified sources providing an acoustic data center capability. The system enables the operator / sonar analyst to run recorded sonar data files at faster than real-time speed to review, analyze and exploit the data enabling acoustic intelligence extraction and supporting acoustic threat databases. TruView is the heart of the Canadian Navy's Acoustic Data Analysis Center (ADAC).

## Mine Large Data Sets Effectively

The TruView Rapid Processing and Analysis (RPA) system provides a truly generic sonar capability that enables operators to efficiently and effectively mine large data sets for valuable intelligence.

## Diversified Deployment

TruView can be deployed on a range of computing platforms with varied CPU performance and display sizes to trade off portability with power and storage. Examples include a laptop, rack-mounted server and console, and a fixed server installation with two large monitors..



NAVAL

**GeoSpectrum.ca**

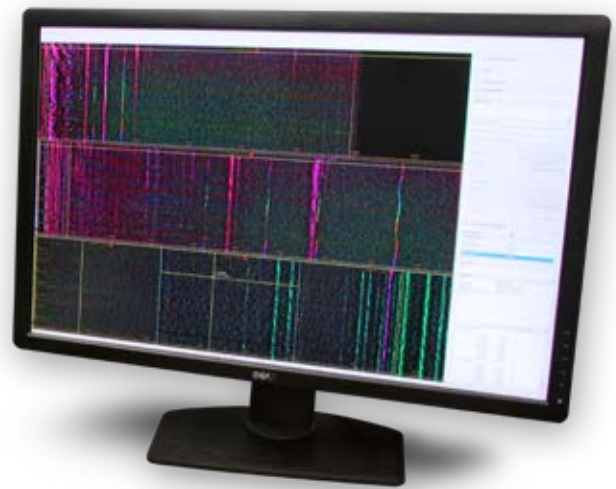
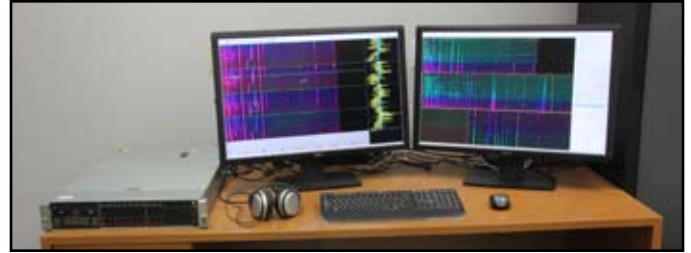
# TruView - Rapid Acoustic Data Processing System

## Post-Mission Sonar Analysis & Display with Threat Database Support

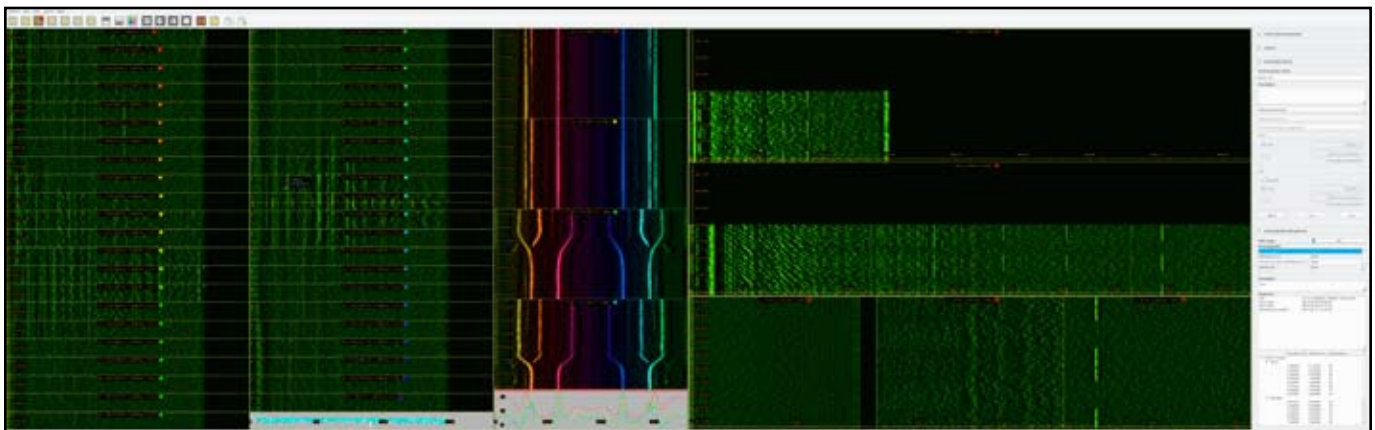
### Features

- Process data from virtually any passive sonar system including towed/linear arrays, hull-mounted sonar / cylindrical arrays, DIFAR sonobuoys, and broadband hydrophones
- Receive sonar data in a variety of standardized formats or via purpose-built plugins
- Perform concurrent narrowband, broadband, transient, and DEMON processing
- Select from optimized processing configurations for detection of submarines, surface ships, marine-mammal vocalization, and transients
- Perform rapid processing typically 8X to 20X real-time, up to 100X real-time\*
- Software runs on commercial-off-the-shelf hardware
- Use powerful analysis tools for examining harmonic relationships to support classification and intelligence extraction
- User friendly and easy to learn and use
- Variants of this system design are available for real-time manned passive sonar, active sonar, or embedded low-power autonomous processing
- System can be scaled to computing power and display size desired

\* depends on computer and sonar type



  
**TRUVIEW**  
SECURE



Processed Data Screen

GeoSpectrum Technologies Inc.  
10 Akerley Blvd, Unit #19 Dartmouth,  
Nova Scotia Canada B3B 1J4

Tel: (902) 406-4111  
Email: [sales@geospectrum.ca](mailto:sales@geospectrum.ca)  
[GeoSpectrum.ca](http://GeoSpectrum.ca)

©Copyright 2017 GeoSpectrum Technologies Inc. All Rights Reserved.  
TRUVIEW\_2017.05-v1.1

